

# Overview of specific research work

ConCISE.net, Modul 3 Workshop n° 1  
Frankfurt 10<sup>th</sup> / 11<sup>th</sup> March 2008  
Beate Kallenbach-Herbert  
Öko-Institut e.V.

## Overview of activities

Focus: radioactive waste disposal

Type of projects:

- developing concepts for participatory processes considering
  - different phases
  - legal, financial, organisational requirements + timescale
  - integration of regional development
- advisory service

Clients:

- BfS – implementer
- BMU – politically responsible

## Situation in Germany

High active waste (HAW) disposal:

- No political agreement on the way to proceed (including “Gorleben-question”)
- Lack of procedures and criteria for site selection (and approval)
- Unclear competences and financing

Low and medium active waste (LAW/MAW):

- Konrad repository, construction in preparation
- ERAM and Asse-research-mine: preparation of closure-approval

# HAW disposal

## Focus:

Pre-process (“Consensus Phase“)

- Get the process started
- Define the key parameters of a site selection process

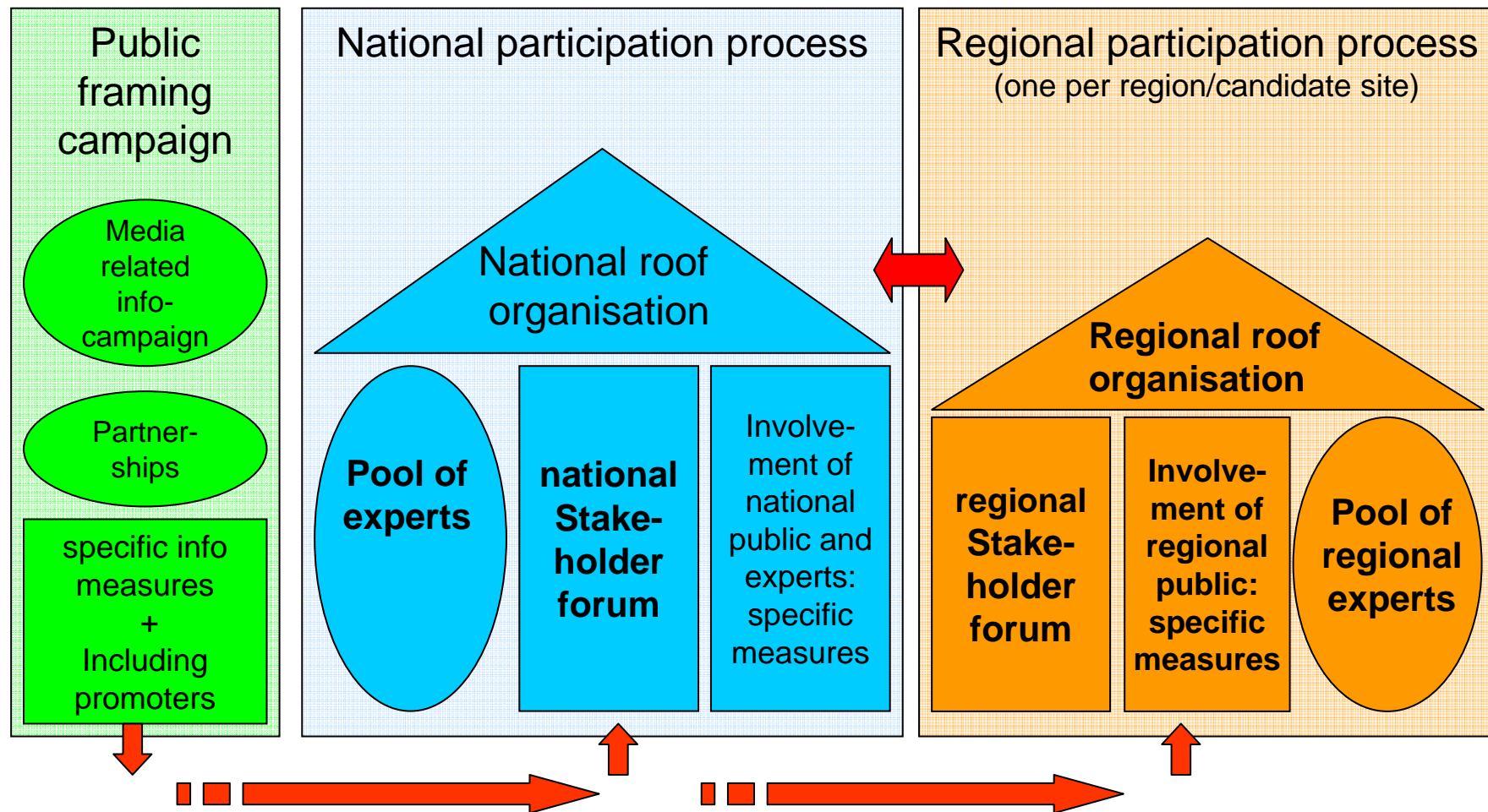
Site selection process

- Interaction of the national and the regional level
- Integration of informal recommendations into formal decision on site selection

Preparation of site approval

- Socio-economic impact assessment
- Integration of regional requirements into formal decision making

## Design option for stakeholder process



## Procedural and site selection issues

### The national level

#### Framework setting:

- Overriding objectives (safety, health, ecology, socio-economy)
- Criteria for site comparison, selection, and evaluation
- Responsibilities, financing, time scale
- Procedure and steps for site selection and approval
- Public involvement
- Regional development

#### Site selection:

- Potential candidate regions on the basis of geological data
- Suitable sites within candidate regions
- Evaluation of site investigations
- Site comparison
- Site selection

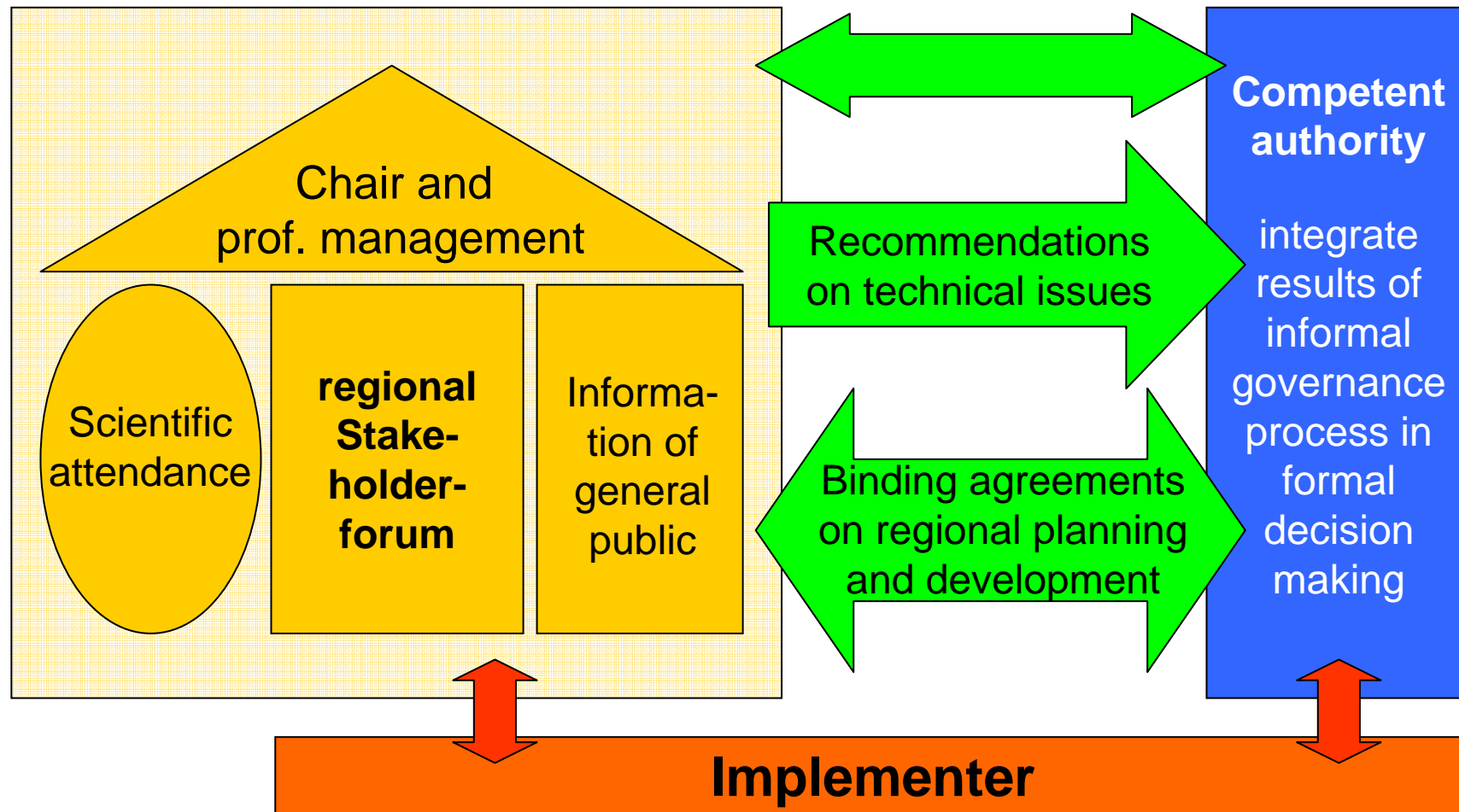
*recommendations to national decision maker (Parliament, BMU)*

### The regional level

#### Regional actions:

- Process adaptation and implementation
- Accompany site investigations
- Technical, spatial, logistical etc. planning
- Socio-economic assessment
- Planning + negotiation of measures for regional development

## Integration of informal measures and formal process



## Konrad repository

### Situation:

1982: Start of Plan approval process for transfer of former ore-mine Schacht Konrad to repository

1991-92: 6 months of (formal) public debate

no further measures of public or stakeholder involvement

no socio economic assessments



April 2007: Final decision of court: Plan approval of May 2002 is valid

Announced timeframe:

2007 – 2009: preparation of construction

2009 – 2013: construction of repository

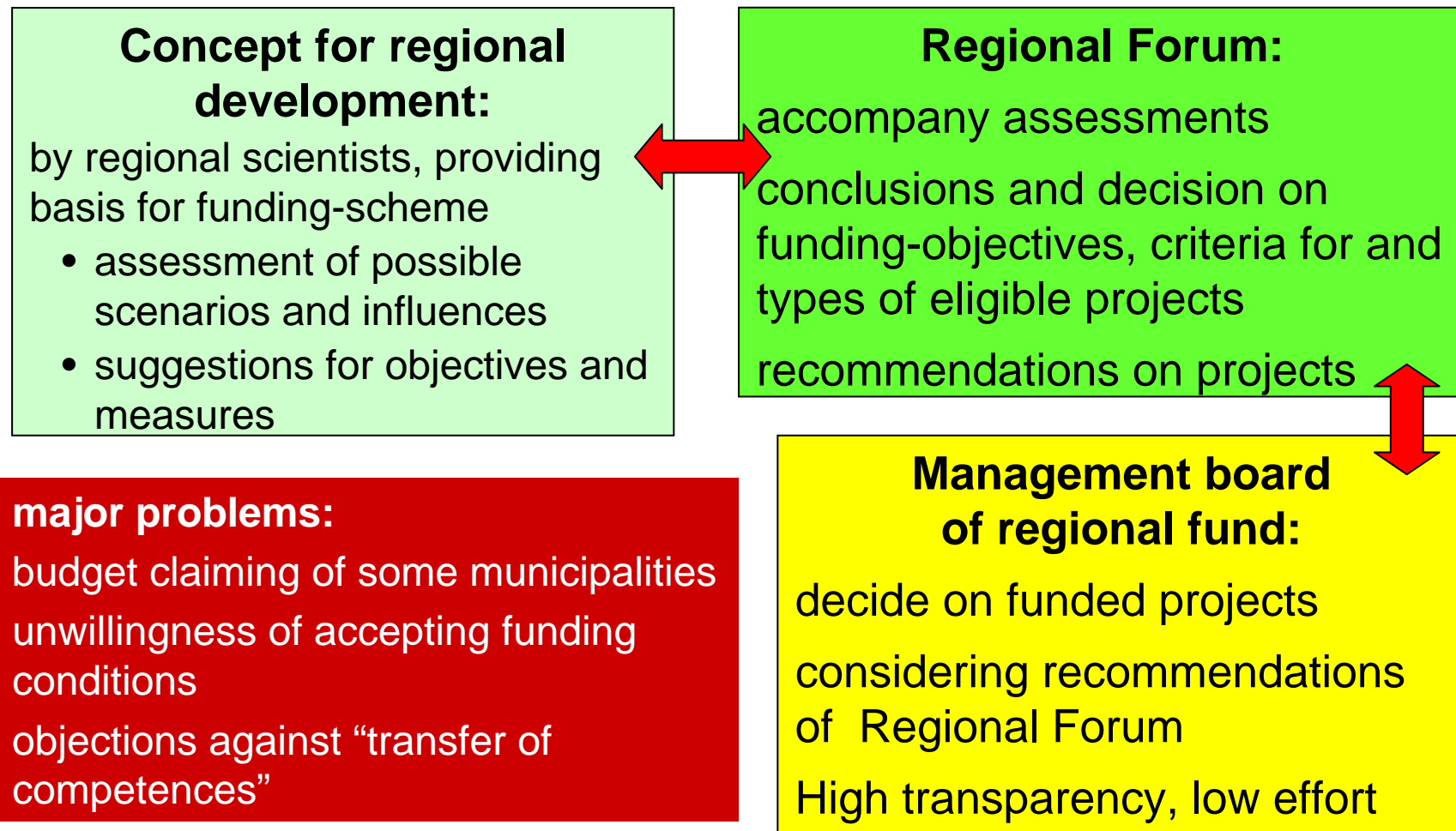
from 2013: operation

# Konrad repository

## Project objectives:

- Initiation of measures for stakeholder participation in the construction and operation phase
  - Dialogue on:
    - design of communication process
    - technical issues and steps of realisation
    - socio-economic assessment
    - spatial, logistic ... planning
  - **Decision on:**
    - **measures for regional development**
- ➔ Providing a well financed fund for regional development was announced by BMU

## Organisation of decision making – “Regional development fund Konrad“



## Asse research mine

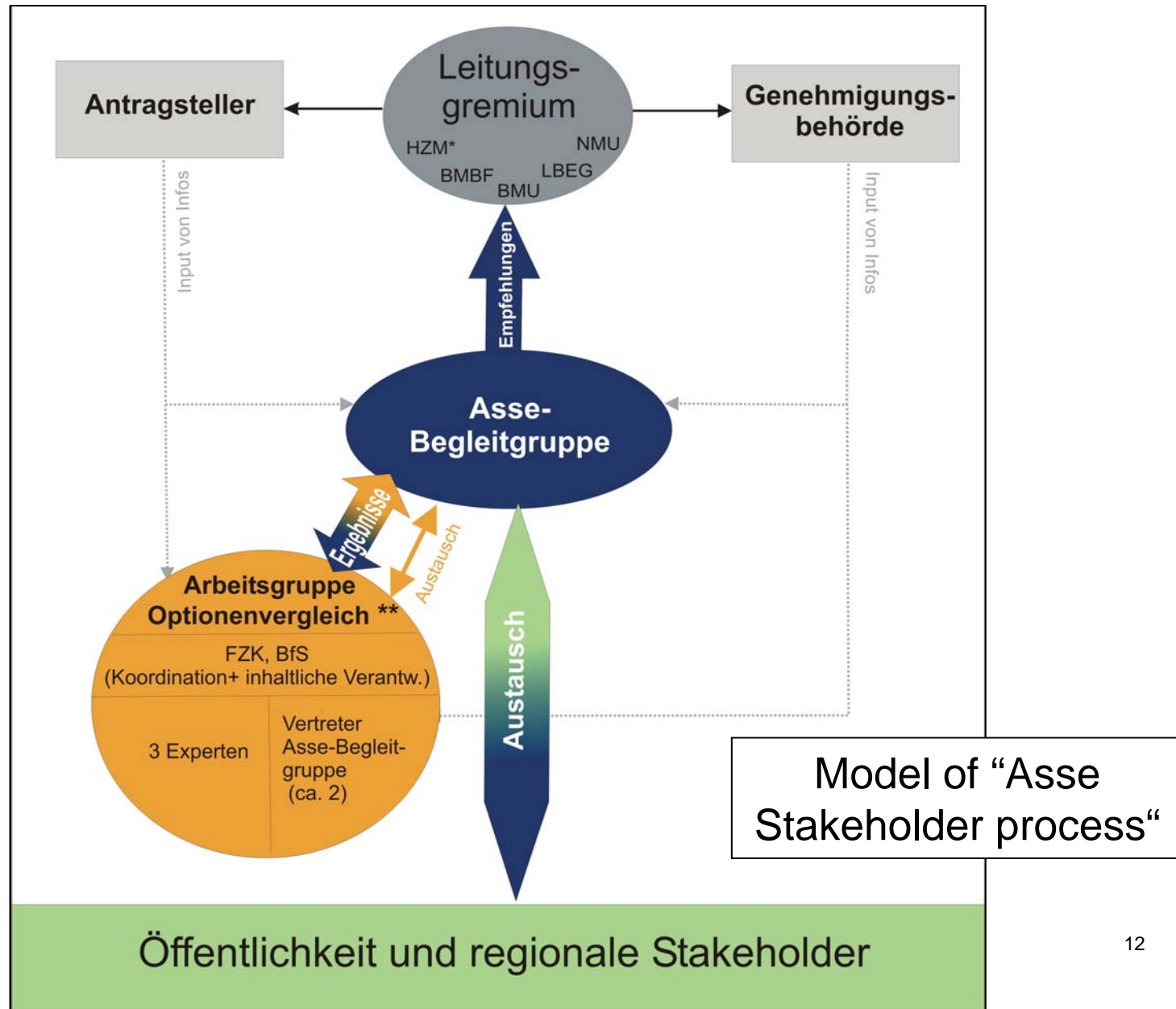
### **Situation:**

- A former salt mine, used as research mine for LAW/MAW disposal
- Retrieval of waste was not intended
- Plan approval for closure in preparation
- Brine inflow at 12 m<sup>3</sup> per day since some years

### **Objectives:**

Initiation of an informal stakeholder process

- to address public questions and concerns
- to assess feasibility of alternative options for closure
- to improve the dialogue of regional stakeholders with implementer and authority



## Asse Stakeholder process

### Major problems:

- Extreme lack of confidence in implementer (and authority)
- Extensive discussions on access to implementer's reports
- No official moratorium of formal approval process  
→ Integration of recommendations from informal process could fail due to interference of time-scales